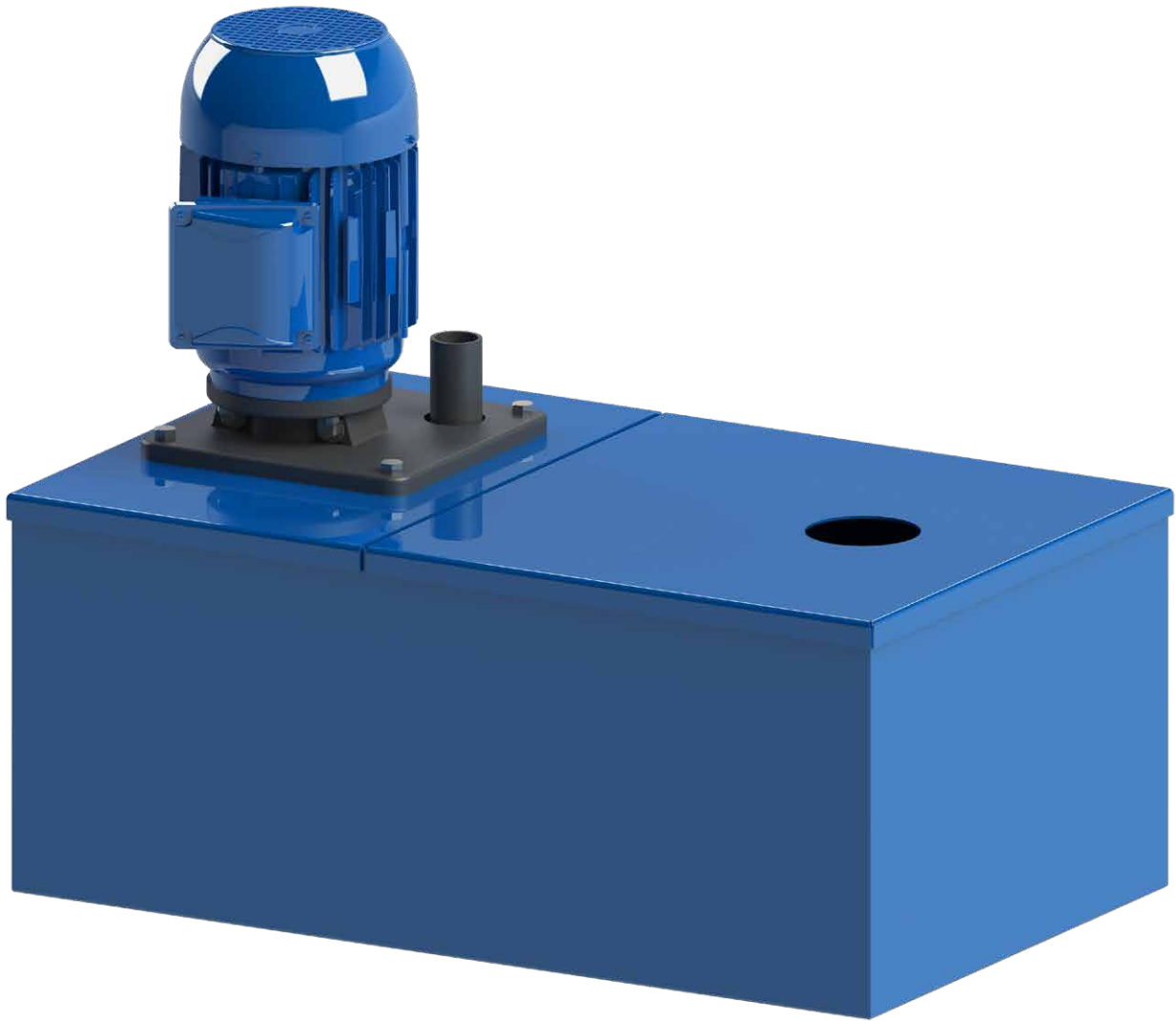




A RUTHMAN COMPANY

Machine Tool Tank Units and Accessories



www.Gusher.com | Info@Gusher.com | 859.824.5001



RUTHMAN
Engineering Pump Solutions™

GUSHER[®]

MACHINE TOOL TANK UNITS

These general purpose units are widely used for supplying coolant to machine tools not otherwise equipped with a coolant system. Available in standard reservoir sizes from 10 to 200 gallon with pumps from 1/25 through 7½ hp, Gusher tank units may be used as permanent, portable or auxiliary coolant systems.

The rugged Gusher immersible pump provides instantaneous coolant flow which may be throttled partially or completely without overloading the motor. There are no bearings, seals or metal-to-metal contact within the pump itself, thereby permitting an efficient, continuous flow of grit and abrasive laden coolant.

The reservoir is fabricated of reinforced, heavy gauge hot rolled steel for industrial use and extended service. All units feature an extra heavy

gauge, split lid design to facilitate cleaning without disassembly.

The standard models shown are sized to suit a wide range of applications. Custom models are available to suit specific needs or unusual requirements.

All models are furnished with pump and motor mounted on the reservoir complete with internal plumbing. Models T-10-CB, T-21-CB and T-38-CB feature built-in chip baskets as standard. Chip baskets and baffle units are offered optionally on other models.

When ordering, specify standard model number, electrical characteristics and accessories desired. Standard electrics are detailed on the price sheet; other electrical characteristics will be quoted on request.



Gusher Model T-10M, shown with optional hose, nozzle and valve assembly, typifies the standard tank unit design. Swivel casters are also available optionally on models thru T-80F for added portability.



Gusher Models T-10-CB, T-21-CB (shown) and T-38-CB are furnished complete with chip basket, hose, nozzle and valve assembly. (Optional on all other models)



The split lid design, shown here on the Model T-50, is furnished as standard on all models except CB styles. On models T-80 and larger, the reservoir is angled to permit chip removal with a shovel or hoe.

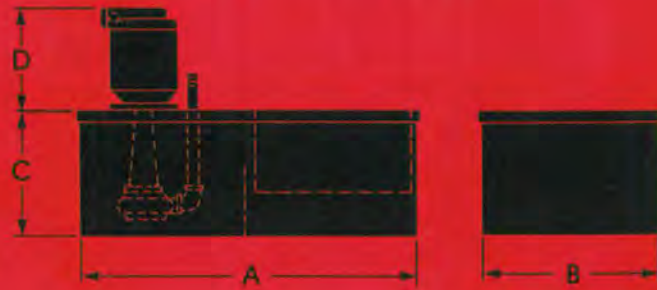


I-beam legs are furnished as standard on Models T-100 thru T-200-C to facilitate relocation via fork lift.

MODELS 10 to 21 GALLON CAPACITY



Shown with optional chip basket



TANK DIMENSIONS (inches)

TANK UNIT	CAPACITY (GAL.)	PUMP	HP	RPM	DISCHARGE	PERFORMANCE					IMPELLER	A LENGTH	B WIDTH	C HEIGHT	D MOTOR
T-10M	10	IP3 long	1/25	3000	3/8	Ft. Hd. GPM	4 9	6 8	8 6	10 3	6055-2	20	12	10	49/16
T-10	10	IP3 long	1/10	3450	1/2	Ft. Hd. GPM	2 21	8 18	12 12	14 7	6055	20	12	10	7¾
T-10-CB*	10	IP3 long	1/10	3450	1/2	Ft. Hd. GPM	2 21	8 18	12 12	14 7	6055	20	12	10	7¾
T-16A	16	IP3 long	1/10	3450	1/2	Ft. Hd. GPM	2 21	8 18	12 12	14 7	6055	26¾	14½	10	7¾
T-16B	16	9025 long	¼	3450	¾	Ft. Hd. GPM	5 32	18 25	25 15	32 5	6081	26¾	14½	10	811/16
T-21-CB*	21	9025 long	¼	3450	¾	Ft. Hd. GPM	5 32	18 25	25 15	32 5	6081	36	16	9¾	811/16
T-21A	21	9040 long	½	3450	¾	Ft. Hd. GPM	13 28	24 20	31 12	34 4	6061-DL	36	16	9¾	111/16

*Note: Model T-10-CB and T-21-CB furnished complete with chip basket, hose, nozzle and valve assembly. Optional on other models.

MODELS 32 to 50 GALLON CAPACITY



TANK DIMENSIONS (inches)

TANK UNIT	CAPACITY (GAL.)	PUMP	HP	RPM	DISCHARGE	PERFORMANCE					IMPELLER	A LENGTH	B WIDTH	C HEIGHT	D MOTOR
T-32	32	RL-xlong	⅓	1725	1	Ft. Hd. GPM	6 50	15 35	19 20	23 5	2218	36	15	15	9¾
T-32A	32	9040 xlong	¼	1725	¾	Ft. Hd. GPM	4 32	10 22	13 15	15 4	6061	36	15	15	10⅛
T-32E	32	RL-xlong	½	1725	1	Ft. Hd. GPM	15 50	22 33	24 20	27 5	2216-K	36	15	15	11¾
T-38CB*	38	RL-xlong	½	1725	1	Ft. Hd. GPM	15 50	22 33	24 20	27 5	2216-K	37¾	14¾	16	11¾
T-38A	38	UD-xlong	¾	3450	1	Ft. Hd. GPM	5 70	27 50	38 30	47 10	2217-S	37¾	14¾	16	11¾
T-50	50	RL-xlong	½	1725	1	Ft. Hd. GPM	15 50	22 33	24 30	27 5	2216-K	36	21⅞	15	11¾
T-50D	50	UD-xlong	½	3450	1	Ft. Hd. GPM	5 50	14 47	30 26	37 8	2217-B	36	21⅞	15	11¾
T-50E	50	UD-xlong	¾	3450	1	Ft. Hd. GPM	5 70	27 50	38 30	37 2	2217-S	36	21⅞	15	11¾
T-50F	50	UD-xlong	1	3450	1	Ft. Hd. GPM	20 75	44 52	50 35	68 5	2218-B	36	21⅞	15	10¾

*Note: Model T-38-CB furnished complete with chip basket, hose, nozzle and valve assembly. Optional on other models.

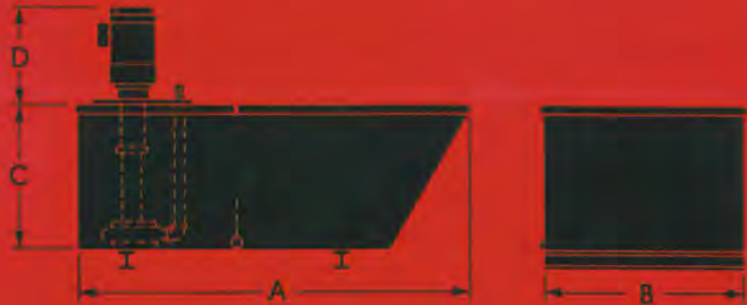
MODELS 80 GALLON CAPACITY



TANK DIMENSIONS (inches)

TANK UNIT	CAPACITY (GAL.)	PUMP	HP	RPM	DISCHARGE	PERFORMANCE					IMPELLER	A LENGTH	B WIDTH	C HEIGHT	D MOTOR
T-80	80	11029 long + 5	¾	1725	1¼	Ft. Hd. GPM	3 93	19 60	27 30	30 8	2292-ETN	50	27¾	15	13¾ ₁₆
T-80-B	80	CML-long	1	1725	2	Ft. Hd. GPM	5 170	11 120	17 70	22 10	2041-G	50	27¾	15	13¾ ₈
T-80C	80	UD-xlong	¾	3450	1	Ft. Hd. GPM	5 70	27 50	38 30	47 10	2217-S	50	27¾	15	10¾
T-80D	80	UD-xlong	1	3450	1	Ft. Hd. GPM	20 75	44 52	50 35	68 5	2218-B	50	27¾	15	10¾
T-80E	80	RL-xlong	1½	3450	1¼	Ft. Hd. GPM	5 125	38 80	58 40	70 8	2218-A	50	27¾	15	13¾ ₈
T-80F	80	RL-xlong	2	3450	1¼	Ft. Hd. GPM	40 68	58 60	95 30	110 10	2216-EL5WA	50	27¾	15	13¾ ₈

MODELS 100 to 200 GALLON CAPACITY



TANK DIMENSIONS (inches)

TANK UNIT	CAPACITY (GAL.)	PUMP	HP	RPM	DISCHARGE	PERFORMANCE					IMPELLER	A LENGTH	B WIDTH	C HEIGHT	D MOTOR
T-100	100	11029 long + 5	1½	3450	1¼	Ft. Hd. GPM	3 135	30 95	47 50	57 10	2292-J	62	28	15	14
T-100A	100	11029 long + 5	2	3450	1¼	Ft. Hd. GPM	3 135	30 95	47 50	57 10	2292-J	62	28	15	14
T-100B	100	11029 long + 5	3	3450	1¼	Ft. Hd. GPM	10 180	35 120	60 60	68 30	2292-DL	62	28	15	14
T-100C	100	11029 long + 5	5	3450	1¼	Ft. Hd. GPM	29 200	57 150	80 100	100 25	2292-C	62	28	15	14
T-150	150	29718 long	1½	3450	1¼	Ft. Hd. GPM	3 135	30 95	47 50	57 10	2292-J	60	28	24	13¼
T-150A	150	29718 long	2	3450	1¼	Ft. Hd. GPM	3 135	30 95	47 50	57 10	2292-J	60	28	24	13¼
T-150B	150	29718 long	3	3450	1¼	Ft. Hd. GPM	10 180	35 120	60 60	68 30	2292-DL	60	28	24	13¼
T-150C	150	29718 long	5	3450	1¼	Ft. Hd. GPM	29 200	57 150	80 100	100 25	2292-C	60	28	24	13¼
T-200	200	29718 long	2	3450	1¼	Ft. Hd. GPM	3 135	30 95	47 50	57 10	2292-J	77	28	24	13¼
T-200A	200	29718 long	3	3450	1¼	Ft. Hd. GPM	10 180	35 120	60 60	68 30	2292-DL	77	28	24	13¼
T-200B	200	29718 long	5	3450	1¼	Ft. Hd. GPM	29 200	57 150	80 100	100 25	2292-C	77	28	24	13¼
T-200C	200	29718 long	7½	3450	1¼	Ft. Hd. GPM	22 210	89 120	117 60	126 30	2292	77	28	24	18 ⁹ / ₁₆

ACCESSORIES

NYLON
FITTINGS
ALSO
AVAILABLE

ELECTRICAL CABLE / SWITCH ASSEMBLY

Available only on 115/230 volt, single phase models through 1/4 hp, the assembly includes a six foot cable and in-line off/on switch. The assembly is prewired to motor and plug.



HOSE, NOZZLES AND VALVES

Priced separately, throttle valves, 12" flexible coolant nozzles and six foot neoprene hose and fittings are available for 3/8", 1/2" and 3/4" N.P.T. Hose and valves for 1" N.P.T. pipe are also available.

Note: Hose, nozzle and valve assembly included with models T-10-CB, T-21-CB and T-38-CB as standard.

CASTERS AND LEGS

Swivel casters or I-beam legs are optionally available on models thru T-80-F to facilitate portability. On Models T-100 thru T-200-C, the I-beam legs are included as standard equipment.

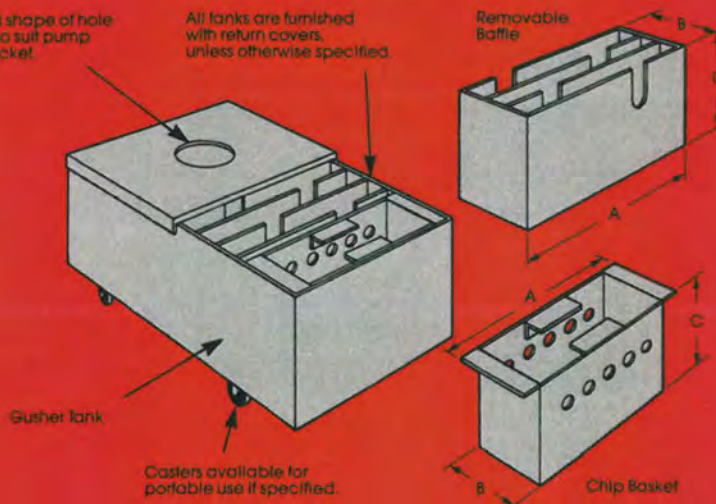
CHIP BASKETS AND BAFFLES

Gusher chip basket and baffle units are offered optionally on the models indicated to entrap virtually all grit and chips through settlement. The units are easily removed for cleaning without disassembly.

Size and shape of hole altered to suit pump and bracket.

All tanks are furnished with return covers, unless otherwise specified.

Removable Baffle



Removable Baffles

BAFFLE NUMBER	TANK CAPACITY	DIMENSIONS		
		A	B	C
B-16	16, 21	13 7/8"	7"	9"
B-32	32, 38	14 5/8"	9"	14"
B-50	50	21 3/8"	11"	14"
B-80	80, 100	27 5/8"	12"	14"
B-150	150, 200	27 5/8"	12"	23 1/2"

Baffles are available optionally on all models except T-10-CB, T-21-CB and T-38-CB. On ten and sixteen gallon tank units, a baffle may be used instead of a chip basket but not in addition to a chip basket.

To select a baffle choose the baffle number according to tank capacity. Example — A B-50 baffle is used in a T-50 tank unit, however, a B-80 baffle is used in both T-80 series and T-100 tank units. B-150 baffle is used in T-150 and T-200 tank units.

Chip Baskets

BASKET NUMBER	TANK CAPACITY	DIMENSIONS		
		A	B	C
CB-10	10	11 1/2"	8"	6"
CB-16	16, 21	13 3/4"	10"	6"
CB-32	32, 38	14 1/2"	10"	6"
CB-50	50	21 3/8"	10"	6"
CB-80	80, 100	27 1/2"	14"	6"
	150, 200			

Chip baskets are available optionally on all models except T-10-CB, T-21-CB and T-38-CB. On these models, the chip basket is included as standard equipment. On ten and sixteen gallon tank units, a chip basket may be used instead of a baffle but not in addition to a baffle.

To select a chip basket choose the basket number according to tank capacity. Example — A CB-10 basket is used in a T-10 tank unit, however, a CB-80 basket is used in a T-80, T-100, T-150 and T-200 tank unit.

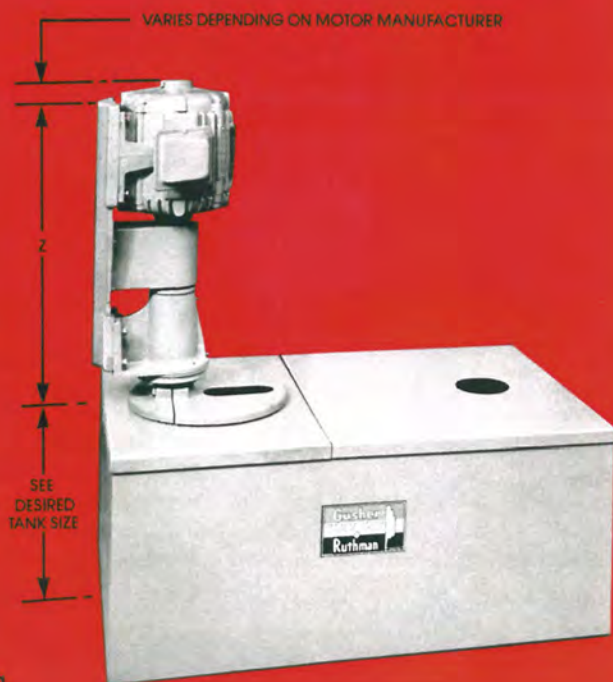
GUSHER[®]

TANK UNITS WITH STANDARD NEMA FOOT MOUNTED MOTORS

All Gusher standard tank units 1/4 hp and larger may be equipped with NEMA foot mounted motors to meet J.I.C. specifications. These units are equipped with a vertical motor base bracket and coupling.

The suffix "CM" is added to the standard model number, for example T-32-CM, and units may be purchased with or without the motor. Except as charted below, all other engineering information is the same. CM models are also available to 7 EQ specifications.

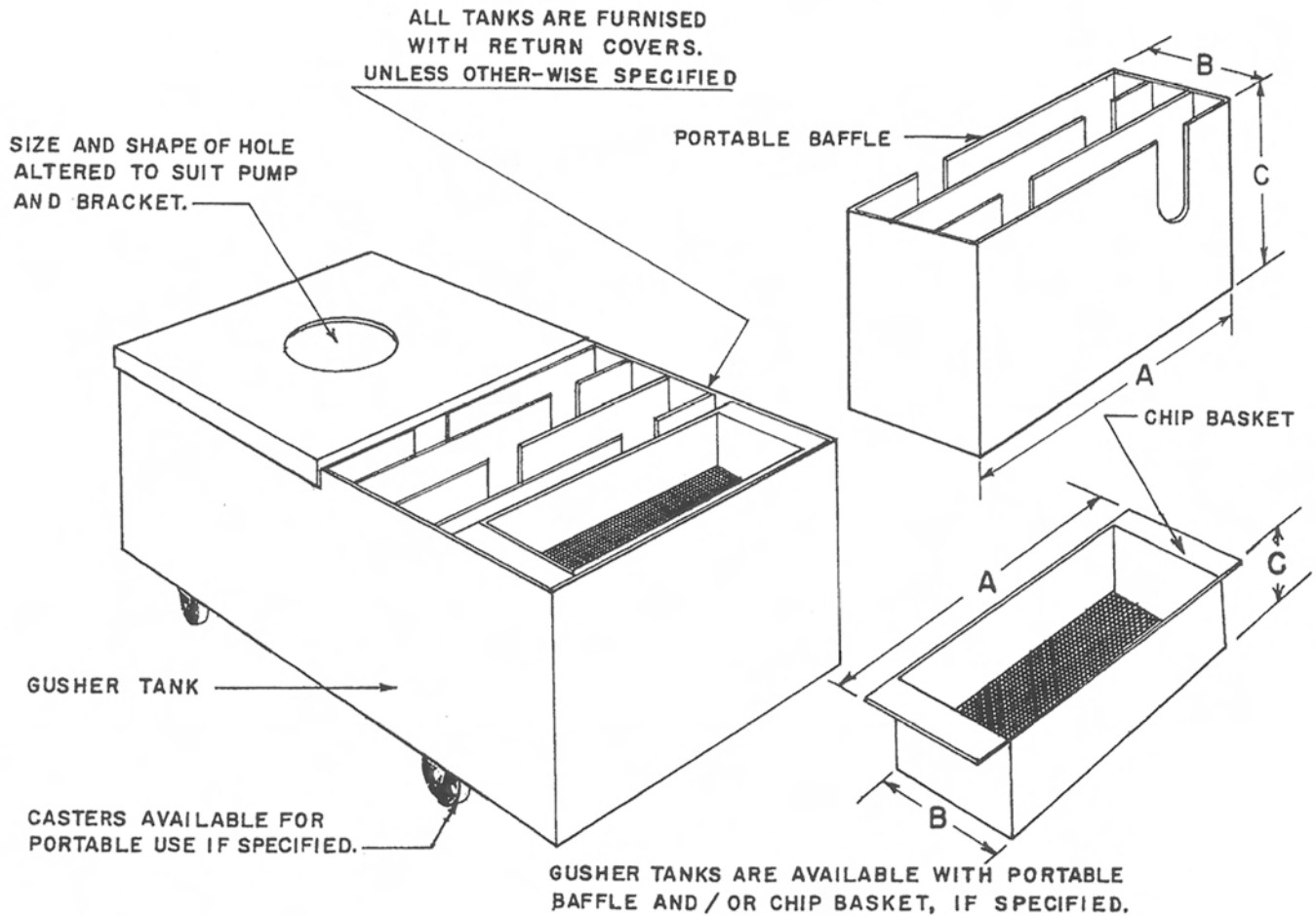
When ordering, specify model number, electrical characteristics and motor frame size. This is essential to assure proper drilling of motor mounting bracket whether or not the motor is included.



TANK UNIT	NEMA FRAME	"Z" DIMENSION (Inches)
T-16B-CM	48	14 ³ / ₄
T-21CB-CM	48	14 ³ / ₄
T-21A-CM	56	16 ¹ / ₄
T-32-CM	56	16 ¹ / ₄
T-32A-CM	56	16 ⁷ / ₁₆
T-32E-CM	56	16 ¹ / ₄
T-38CB-CM	56	16 ¹ / ₄
T-38A-CM	56	16 ¹ / ₄
T-50-CM	56	16 ¹ / ₄
T-50D-CM	56	16 ¹ / ₄
T-50E-CM	56	16 ¹ / ₄
T-50F-CM	56	16 ¹³ / ₁₆
T-80-CM	56	16 ¹ / ₄
T-80B-CM	145-T	22 ⁵ / ₁₆
T-80C-CM	56	16 ¹ / ₄

TANK UNIT	NEMA FRAME	"Z" DIMENSION (Inches)
T-80D-CM	56	16 ¹³ / ₁₆
T-80E-CM	145-T	22 ⁵ / ₁₆
T-80F-CM	145-T	22 ⁵ / ₁₆
T-100-CM	145-T	22 ⁵ / ₁₆
T-100A-CM	145-T	22 ⁵ / ₁₆
T-100B-CM	145-T	22 ⁵ / ₁₆
T-100C-CM	145-T	22 ⁵ / ₁₆
T-150-CM	143-T	22 ⁹ / ₁₆
T-150A-CM	145-T	23 ¹ / ₁₆
T-150B-CM	182-T	23 ¹⁵ / ₁₆
T-150C-CM	184-T	25
T-200-CM	145-T	23 ¹ / ₁₆
T-200A-CM	182-T	23 ¹⁵ / ₁₆
T-200B-CM	184-T	25
T-200C-CM	213-T	26 ⁷ / ₈

TANK UNITS AND ACCESSORIES



CHIP BASKET NUMBER	TANK CAPACITY	A	B	C
CB-10	10	11½"	8"	6"
CB-16	16	11¾"	10"	6"
CB-32	32	14½"	10"	6"
CB-50	50	21⅞"	10"	6"
CB-80	80, 100, 150, 200	27½"	14"	6"

FOR EASY REMOVAL OF ACCUMULATED CHIPS AND GRIT AN OPTIONAL CHIP BASKET CAN BE FURNISHED.

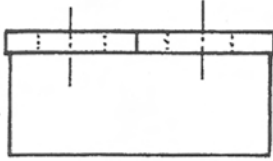
PORTABLE BAFFLE NUMBER	TANK CAPACITY	A	B	C
B-16A	16	13⅞"	7"	9"
B-32	32	14⅝"	9"	14"
B-50	50	21⅜"	11"	14"
B-80	80, 100	27⅝"	12"	14"
B-150	150, 200	27⅝"	12"	23½"

A PORTABLE BAFFLE SETTLES OUT PRACTICALLY ALL CHIPS AND GRIT FROM THE COOLANT AND ALLOWS FOR EASY REMOVAL.

GUSHER®

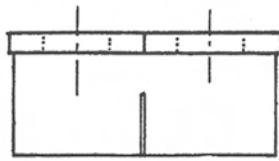
TANK UNITS AND ACCESSORIES

FIG. 1



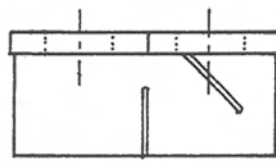
NO BAFFLE

FIG. 2



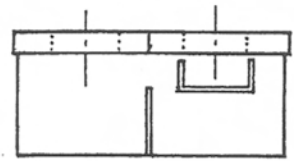
1 BAFFLE

FIG. 3



2 BAFFLES

FIG. 4



1 BAFFLE
1 SETTLING TRAY