



A RUTHMAN COMPANY

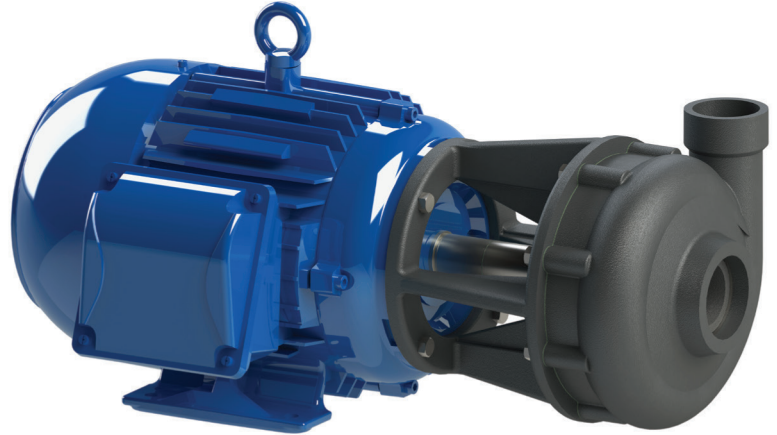
7800 Series Horizontal Pumps

11019-AH
11019-AHSE

3450 RPM

Gusher 7800 Series Horizontal pumps provide years of trouble-free, low maintenance operation. If service is needed beyond standard periodic lubrication, the back pullout design cuts downtime to a minimum.

With the back pullout design, all pump components are removed and reinstalled without disconnecting the piping. After completing repairs (typically replacement of the seal assembly or shaft sleeve) the pump is quickly returned to operation.



Key Specifications

Type: Centrifugal, End Suction

Flow: Up to 182 gpm

Head: Up to 170' TDH

Liquid Temp: Max 180° F

Max Solid Size: .375"

Motor Type: Standard JP Motor

Intake: 2"

Discharge: 1.5"

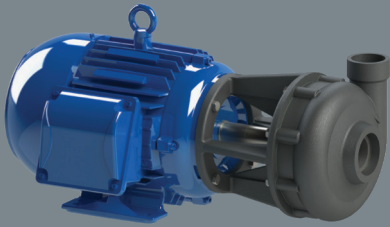
Power: 1.5 hp, 2 hp, 3 hp, 5 hp, 7.5 hp and 10 hp

Features

- Back pullout design reduces service downtime
- Durable one-piece shaft eliminates risk of coupling misalignment
- Renewable shaft sleeve protects shaft from wear
- Mechanical seal prevents leakage
- Available semi-enclosed impeller handles light solids

Options

- Cast Iron, 316 Stainless Steel or 28 Chrome construction
- Choice of 1 or 3 phase motor
- Semi-enclosed impeller
- Multiple mechanical seal materials
- Impeller variations: 316 Stainless Steel or recessed design
- Seal flush line addition
- Long coupled design (CBM model pumps)



Low Maintenance

- Long service life
- Back pullout design
- Renewable shaft sleeve

Custom Design

- Choice of materials and seals
- Semi-enclosed impeller option
- Long coupled models

Applications

- Machine tool coolant systems
- Cooling towers and chillers
- Industrial spray washers
- Industrial washing machines
- Paint/Ecoat paint systems
- Paper pulp
- Wastewater
- Water purification



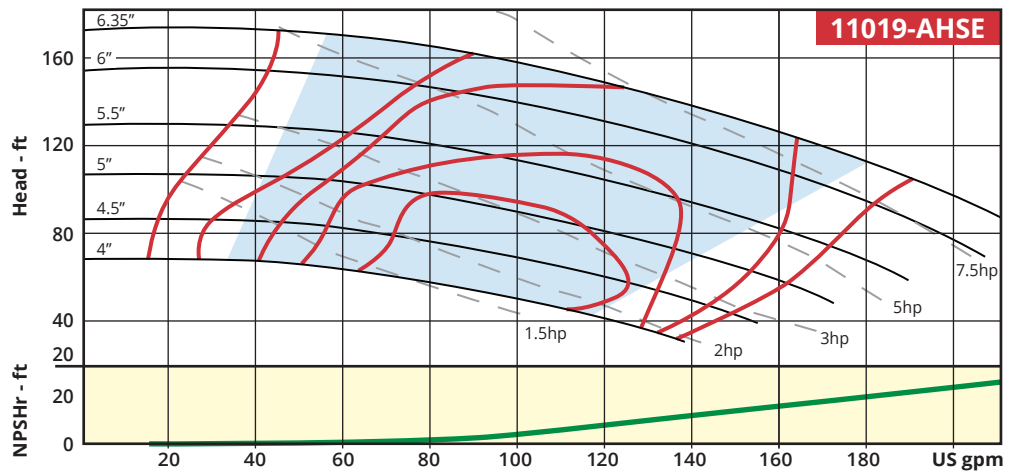
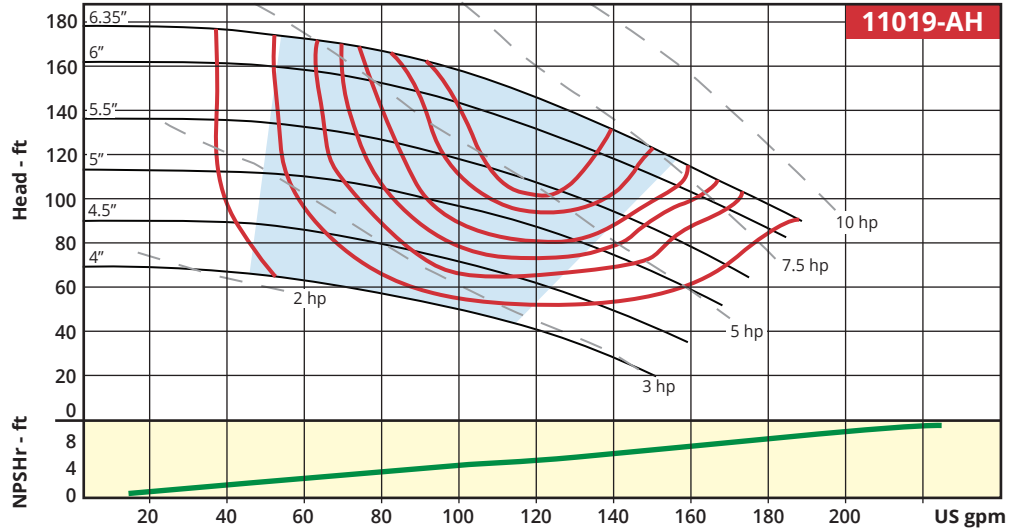
A RUTHMAN COMPANY

www.Gusher.com
Info@Gusher.com
859.824.5001

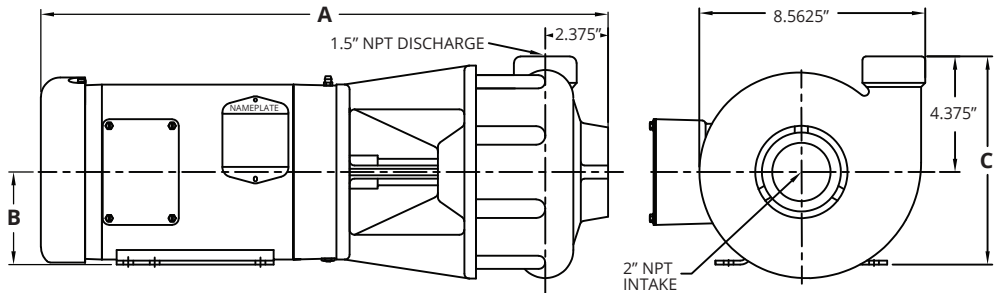
Performance Curves

3450 RPM

Recommended Operating Range



Dimensions*



HP	Total Length (A)	Motor Center to Foot (B)	Total Height (C)	Weight (lbs)
1.5	21.00"	3.50"	7.88"	78
2	21.44"	3.50"	7.88"	80
3	22.00"	4.50"	8.88"	90
5	23.19"	4.50"	8.88"	111
7.5	24.69"	4.50"	8.88"	126
10	26.25"	5.25"	9.625"	195

*For reference only; not for construction. Contact Gusher Engineering for certified drawings.