



Top Pullout for Vertical Pumps

Exclusive Design Option

Routine maintenance is critical to keeping all process equipment running at peak performance. While necessary, preventative work carries a cost in both man hours and loss of production during service.

Gusher's Top Pullout Design (an option on vertical 7550* and Vortex Series pumps) minimizes these costs by cutting down overall service time.

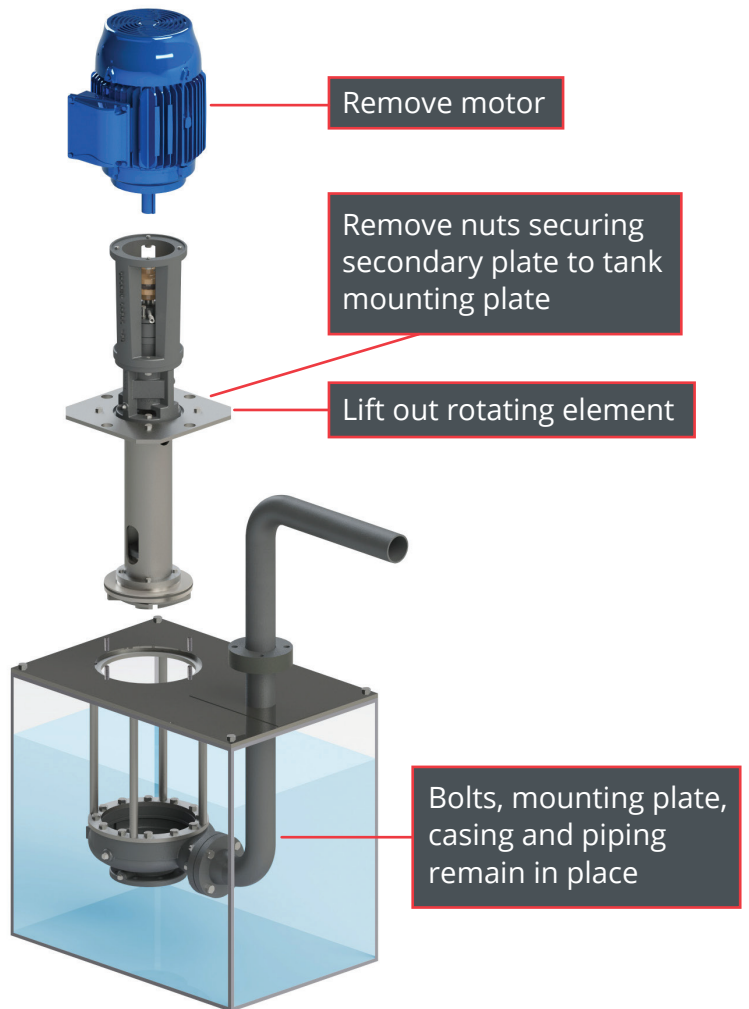
Rather than disconnecting piping and uninstalling the entire pump, this design allows removal of just the rotating elements, leaving the casing and piping in place.

Once the pump is serviced, it can be quickly reassembled and returned to operation. Spare rotating elements can reduce downtime even further, allowing for a quick swap and return to service.

Benefits

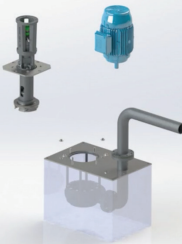
- Reduces maintenance time by as much as 30%
- Pipe connections remain secure
- Frees up facilities staff time for other tasks

*7550 Series with Top Pull Out (TPO) option was formerly known as 7600 Series



The Top Pullout Design:

- Eliminates the need to disconnect piping to uninstall the entire pump
- Allows removal of just the rotating element, leaving the casing and piping in place



Bolts, mounting plate, casing and piping all remain in place



Spare rotating elements can cut downtime even further, allowing for a quick swap and return to service.



Check out this short video where we discuss the advantages of Gusher Pumps' Top Pullout option and show you how this time-saving feature works.